

The A1YA 7912 model has a unique circuit that exhibits a dependable cut-off, a high single pipe lift capacity and automatic two pipe purging. The pump circuit contains a positive displacement involute gear set and two controlling valves.

APPLICATIONS

- Fuel oil #2 and lighter, not compatible for use with blends higher than 5% biodiesel.
- One pipe system (two-pipe system possible).

PUMP OPERATING PRINCIPLE

The fuel from the gear set flows across the cone valve causing a pressure differential sufficient to overcome the spring force of the diaphragm valve. This causes the diaphragm valve to close and the fuel is then routed to the piston chamber. When the level of this flow causes the piston chamber pressure to rise above that of the opposing spring force, the piston opens and flow passes through the nozzle. The piston spring is adjusted such that a given nozzle pressure can be maintained while any resulting excess fuel is metered through the seal chamber and then back to the inlet on single pipe, and the tank on two pipe installation. Cut-off speed is regulated by adjusting the cone valve to a level which gives the necessary pressure drop to open the diaphragm valve. This in turn reduces the piston chamber pressure and the piston shuts off the nozzle.

Installation :

This unit is supplied for 1-pipe operation, without by-pass plug installed. Please verify before installation.

For one pipe installation, the by-pass plug must not be installed. The fuel which is not required at the nozzle is then returned back to the inlet.

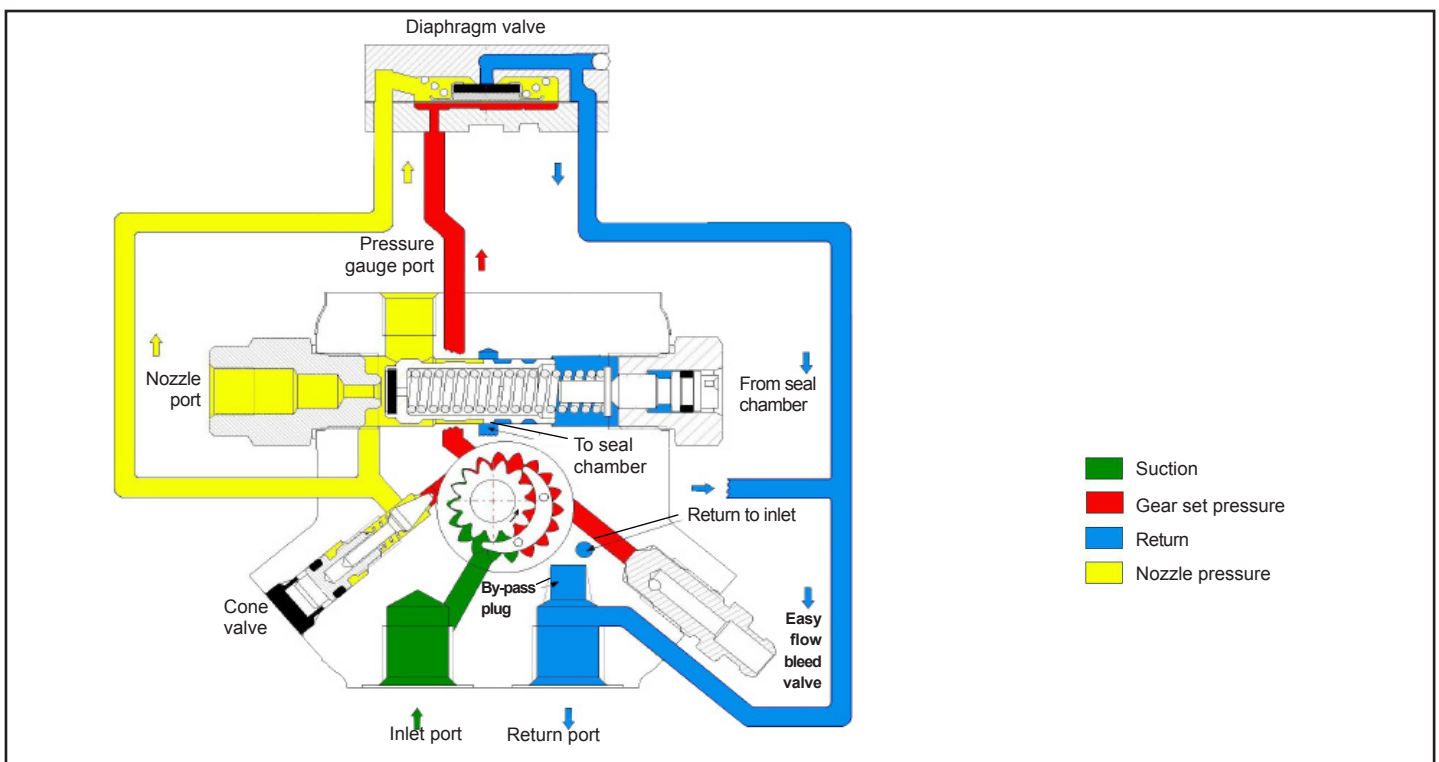
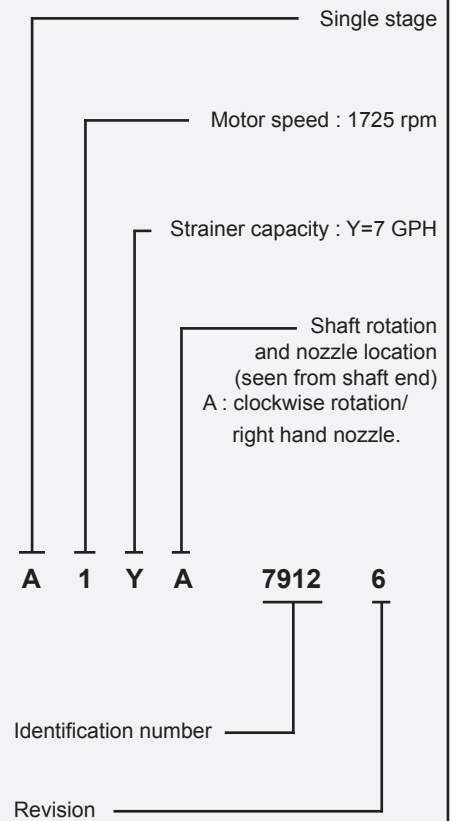
For two pipe installation, the steel plug of the return port must be removed and the by-pass plug must be inserted in the return port allowing any fuel not required at the nozzle to be bypassed back to the tank. The return plug must not be reinstalled.

Bleed :

In one pipe operation, the easy flow bleeder valve must be loosened to bleed the system.

Bleeding in two pipe operation is automatic, but it may be accelerated by loosening the easy flow bleeder.

PUMP IDENTIFICATION




TECHNICAL DATA

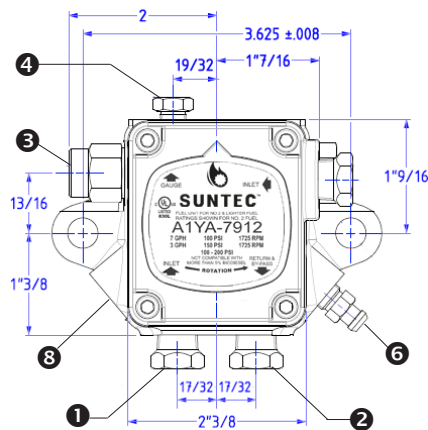
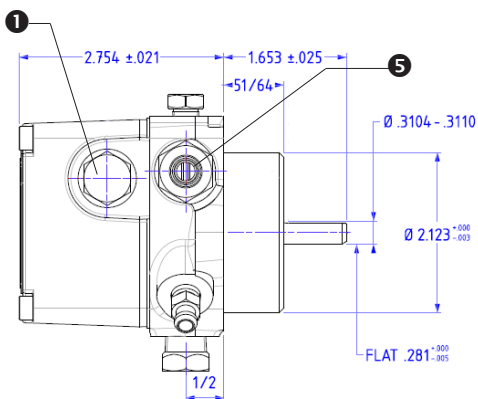
General

Mounting	Flange mounting, any position
Connection threads	
Inlet	1/4 NPTF
Nozzle outlet	1/8 NPTF
Pressure gauge port	1/8 NPTF
Bleeder valve port	1/8 NPTF
Valve function	Pressure regulation
Cut-off	Diaphragm
Strainer	7 GHP
Shaft	5/16 in
By-pass plug	Not inserted in return port, for one pipe system. To be inserted in return port with a 5/32

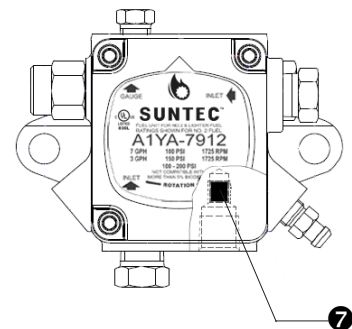
Hydraulic data

Nozzle pressure range	100 - 150 psi
Delivery pressure setting	100 psi
Rated nozzle flow	7 GPH @100 psi, 1725 rpm 3 GPH @150 psi, 1725 rpm
Oil temperature	50 - 115 F
Inlet and return pressures	10 psi max. <i>NFPA limits pressures to 3 psi max</i>
Suction height	Single pipe : 6" Hg max. vacuum, Two-pipe : 12" Hg max. vacuum, to prevent air separation from oil
Power consumption	60 W @100 psi 90 W @150 psi
Rated speed	1725 rpm max.
Recommended motor frequency	60 Hz
Certified	

PUMP DIMENSIONS



Two-pipe system
(insert by-pass plug
in return port)



- ① Inlet ② Return ③ Nozzle outlet ④ Pressure gauge port ⑤ Pressure adjustment ⑥ Bleeder valve ⑦ Internal by-pass plug ⑧ Cone valve